

A
M
A
Z
I
N
G



FANTASTIC COMICS!



Tales

from

Washington College

September/October 2020

Volume VII / Issue I

MY WAC LIFE IN TOKYO



IN THIS ISSUE:

- MY WAC LIFE IN TOKYO1
- MY COLLEGE LIFE5
- BALANCING TENNIS AND STUDIES7
- STUDY AT HOME10

IN TOKYO-CHUOU-KU TIME DIFFERENCE:
13 HOURS FROM WAC

BY SHODAI HIRANO



Tales from Washington College, the graphic novel for international students at Washington College, is published twice per semester by the students of ELL 101 English for Academic Purposes I.

Editor

John C. Hepler, Ph.D.

Assistant Editor / Designer

Wang Gengchen

Story Authors

Shodai Hirano

Ryohei Kawai

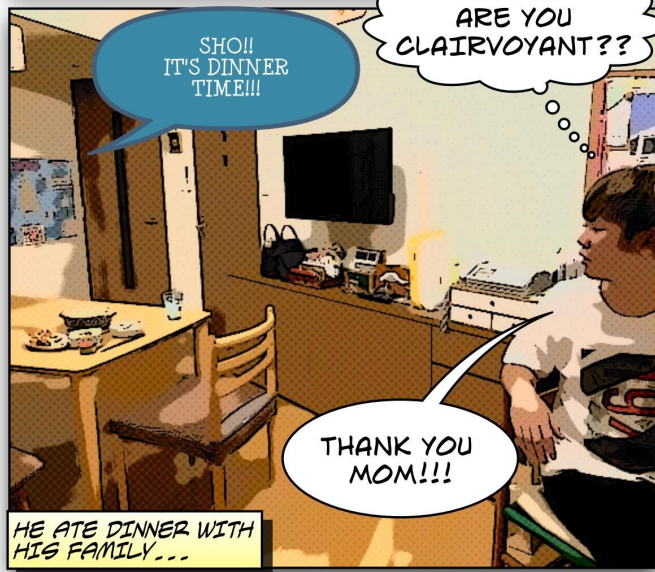
Lu Zheng

Ygue Ndinayo





STORY TIME



Copyright

CLASS TIME

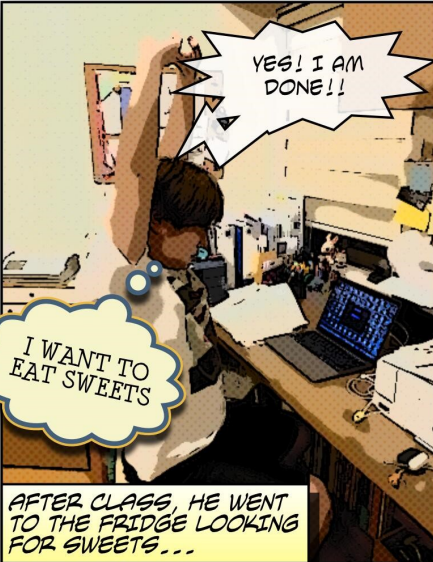
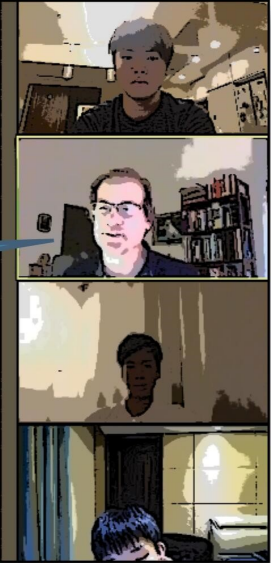
What can you copyright?

- You can copyright a variety of original creative works including:
 - **Written Works** - Books, Articles, Poetry
 - **Music** - Song Lyrics, Recordings, Musical Compositions
 - **Information Technology** - Websites & Online Works, Software, Source Code
 - **Photography** - Print & Digital

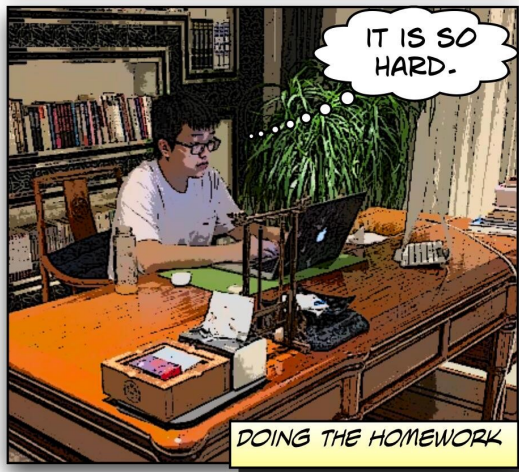
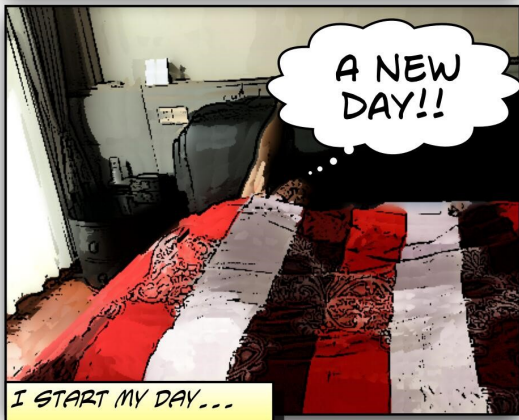
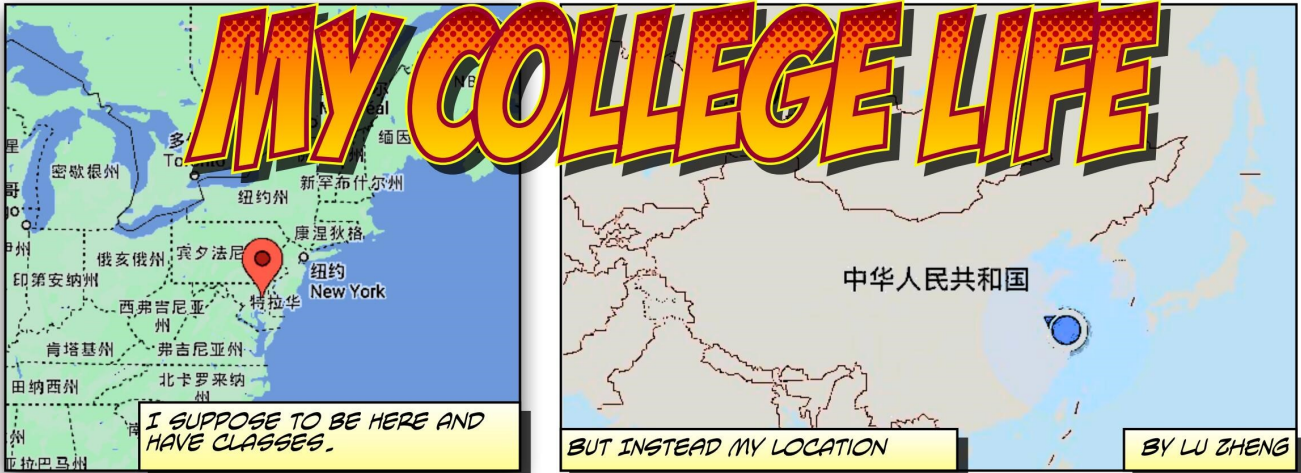
TODAY WE WILL LEARN ABOUT COPYRIGHT

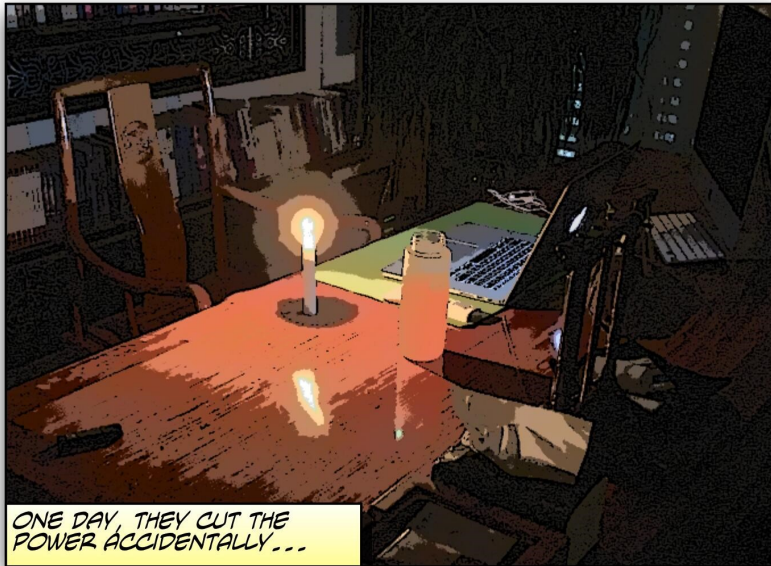
HE TAKES ELL 101 CLASS FROM 10:30PM TO 11:45PM

go Artwork, Drawings, Greeting Cards, Games,

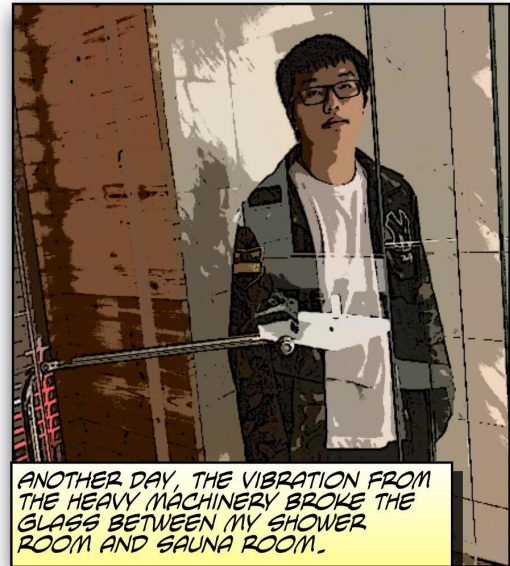


THE END





ONE DAY, THEY CUT THE POWER ACCIDENTALLY...



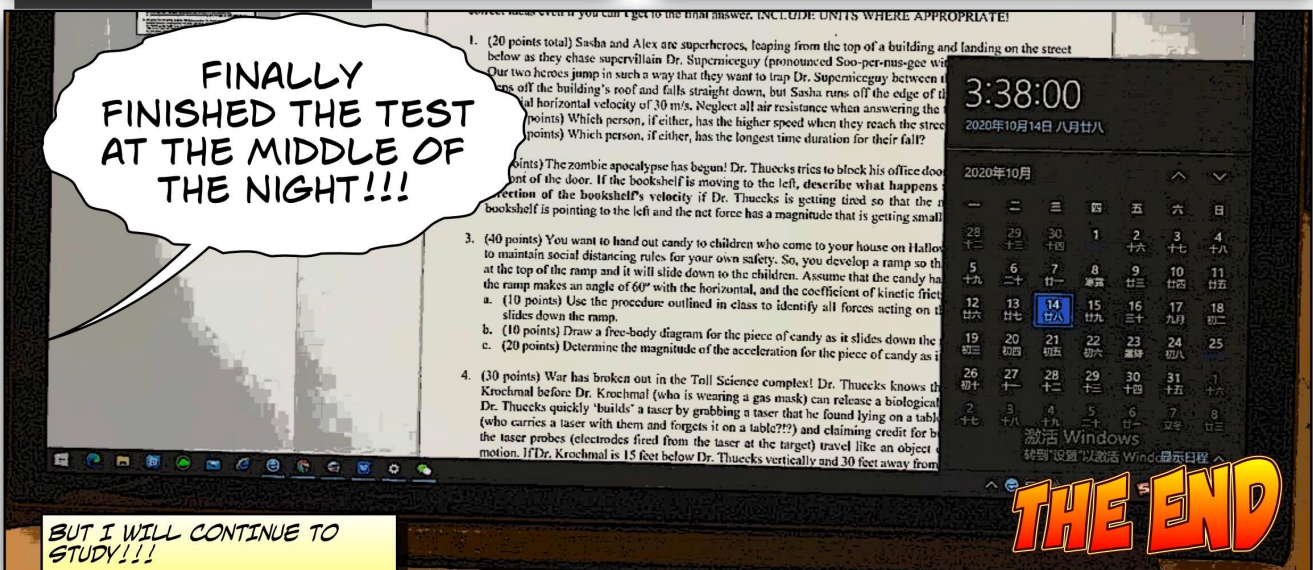
ANOTHER DAY, THE VIBRATION FROM THE HEAVY MACHINERY BROKE THE GLASS BETWEEN MY SHOWER ROOM AND SAUNA ROOM.



ONCE THEY CUT THE WATER PIPES...



...ONLY TO BREAK THE NATURAL GAS PIPE ANOTHER DAY.



FINALLY FINISHED THE TEST AT THE MIDDLE OF THE NIGHT!!!

BUT I WILL CONTINUE TO STUDY!!!

THE END

...solves cases even if you can't get to the final answer. INCLUDE UNITS WHERE APPROPRIATE!

- (20 points total) Sasha and Alex are superheroes, leaping from the top of a building and landing on the street below as they chase supervillain Dr. Superniceguy (pronounced Soo-per-nus-gee with a 'y'). Our two heroes jump in such a way that they want to trap Dr. Superniceguy between themselves. One of the building's roof and falls straight down, but Sasha runs off the edge of the roof with a horizontal velocity of 30 m/s. Neglect all air resistance when answering the questions. (10 points) Which person, if either, has the higher speed when they reach the street? (10 points) Which person, if either, has the longest time duration for their fall?
- (10 points) The zombie apocalypse has begun! Dr. Thuecks tries to block his office door with a bookshelf. The bookshelf is moving to the left, describe what happens to the bookshelf's velocity if Dr. Thuecks is getting tired so that the net force on the bookshelf is pointing to the left and the net force has a magnitude that is getting smaller.
- (40 points) You want to hand out candy to children who come to your house on Halloween to maintain social distancing rules for your own safety. So, you develop a ramp so that the candy can slide down to the children. Assume that the ramp makes an angle of 60° with the horizontal, and the coefficient of kinetic friction is 0.2. (10 points) Use the procedure outlined in class to identify all forces acting on the candy as it slides down the ramp. (10 points) Draw a free-body diagram for the piece of candy as it slides down the ramp. (20 points) Determine the magnitude of the acceleration for the piece of candy as it slides down the ramp.
- (30 points) War has broken out in the Tall Science complex! Dr. Thuecks knows that Dr. Krochmal (who is wearing a gas mask) can release a biological agent. Dr. Thuecks quickly 'builds' a taser by grabbing a taser that he found lying on a table (who carries a taser with them and forgets it on a table???) and claiming credit for building it. The taser probes (electrodes fired from the taser at the target) travel like an object in free fall. If Dr. Krochmal is 15 feet below Dr. Thuecks vertically and 30 feet away from

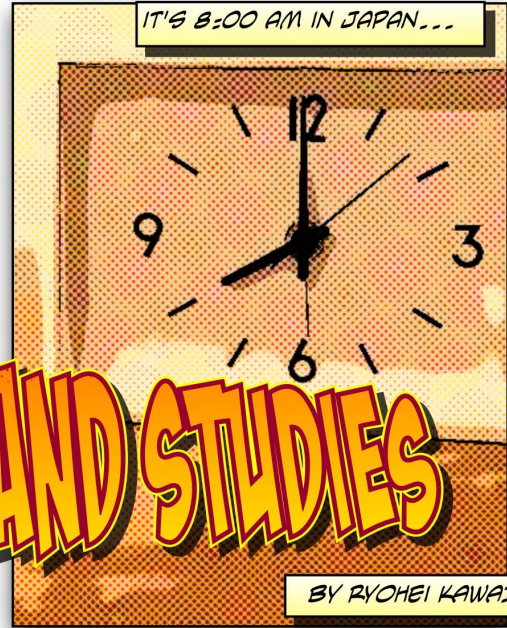
3:38:00
2020年10月14日 八月廿八

| 2020年10月 | | | | | | |
|----------|----|----|----|----|----|----|
| 一 | 二 | 三 | 四 | 五 | 六 | 日 |
| 28 | 29 | 30 | 1 | 2 | 3 | 4 |
| 十二 | 十三 | 十四 | 十五 | 十六 | 十七 | 十八 |
| 5 | 6 | 7 | 8 | 9 | 10 | 11 |
| 十九 | 二十 | 廿一 | 廿二 | 廿三 | 廿四 | 廿五 |
| 12 | 13 | 14 | 15 | 16 | 17 | 18 |
| 廿六 | 廿七 | 廿八 | 廿九 | 三十 | 初九 | 初二 |
| 19 | 20 | 21 | 22 | 23 | 24 | 25 |
| 初三 | 初四 | 初五 | 初六 | 初七 | 初八 | 初九 |
| 26 | 27 | 28 | 29 | 30 | 31 | 1 |
| 初十 | 十一 | 十二 | 十三 | 十四 | 十五 | 十六 |
| 2 | 3 | 4 | 5 | 6 | 7 | 8 |
| 十七 | 十八 | 十九 | 二十 | 廿一 | 廿二 | 廿三 |

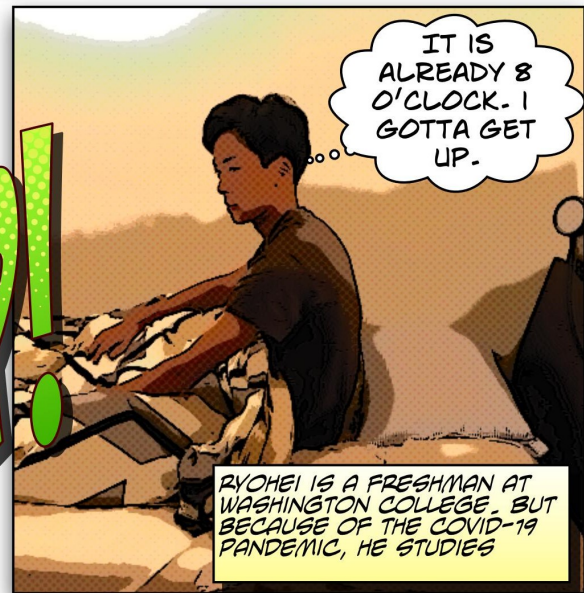
激活 Windows
转到“设置”以激活 Windows 显示日程



BALANCING TENNIS AND STUDIES



BY RYOHEI KAWAI



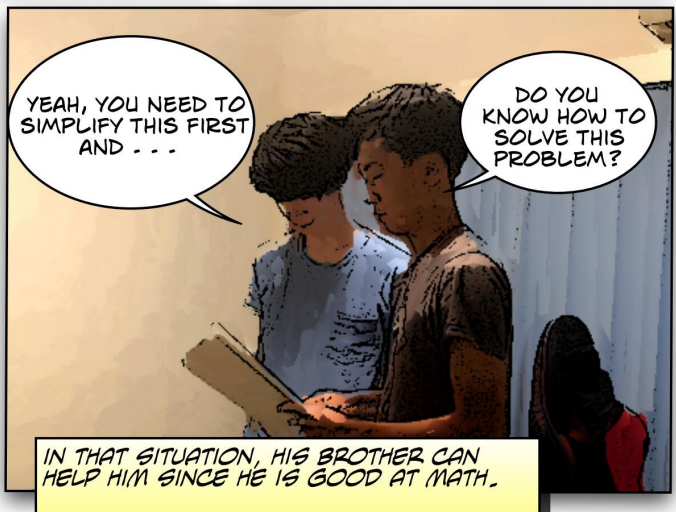
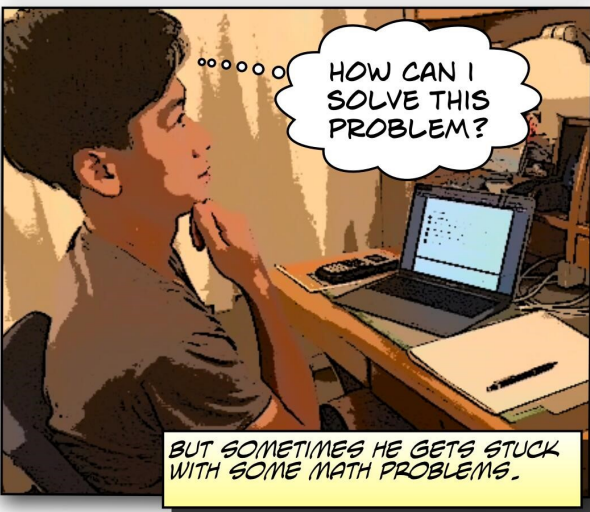
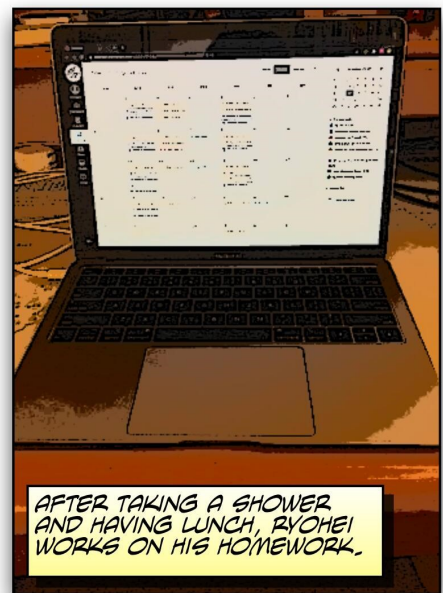
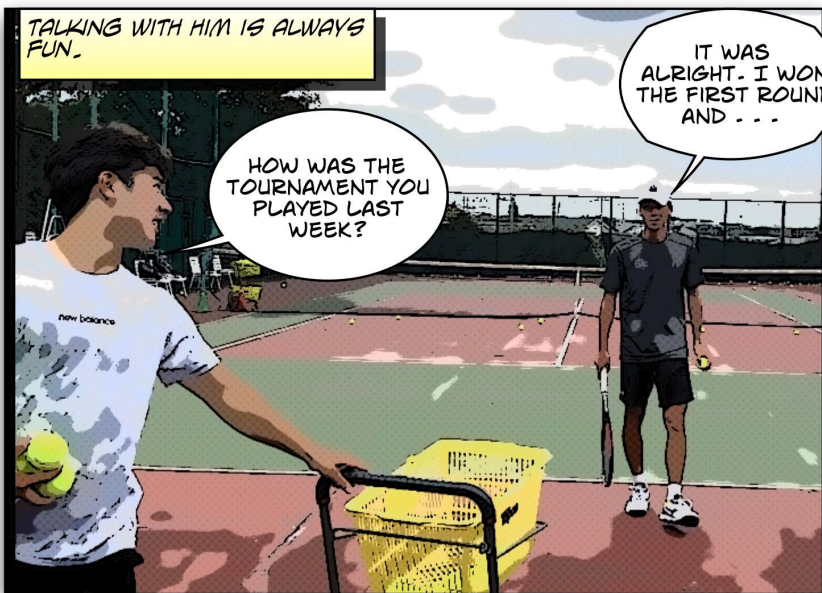
RYOHEI IS A FRESHMAN AT WASHINGTON COLLEGE, BUT BECAUSE OF THE COVID-19 PANDEMIC, HE STUDIES



AFTER EATING BREAKFAST, HE PRACTICES TENNIS WITH ONE OF HIS FRIENDS.

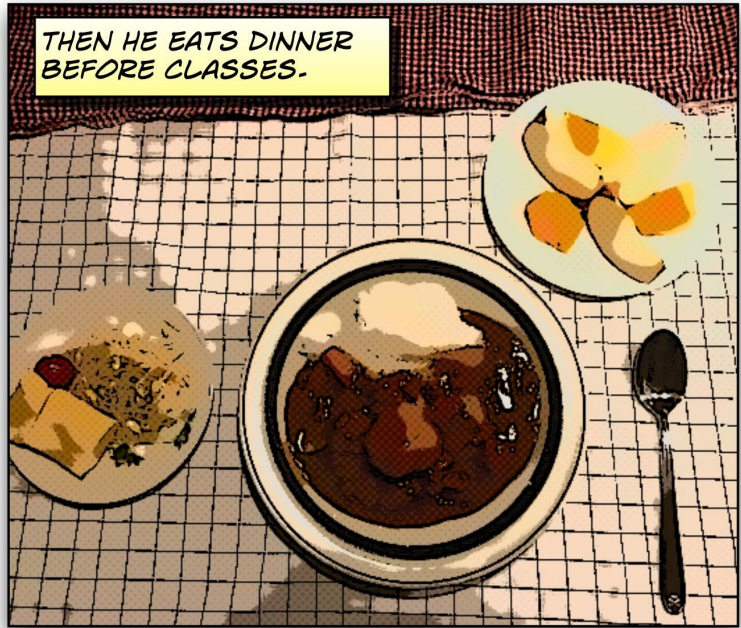


THIS IS HIS FRIEND, YUDAI. HE ALSO GOES TO A COLLEGE IN THE U.S. THEY OFTEN PRACTICE





AND HE OFTEN TAKES A NAP BECAUSE HE DOES NOT GET ENOUGH SLEEP WHEN HE HAS LATE NIGHT CLASSES.



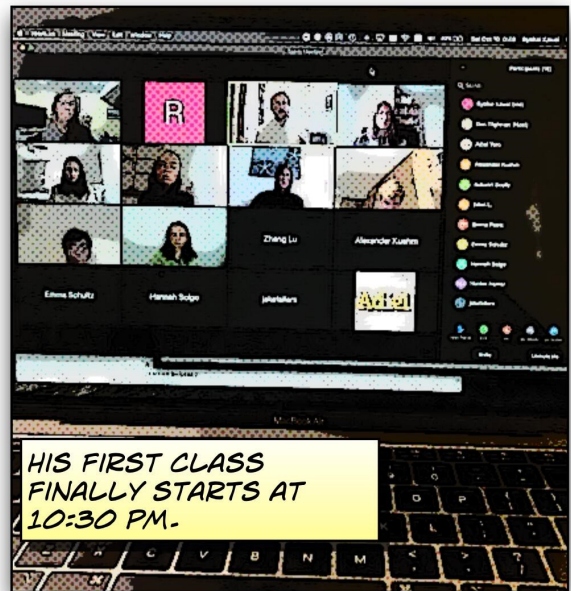
THEN HE EATS DINNER BEFORE CLASSES.



THEY'RE GOING WELL, DAD.

RYOHEI, HOW ARE YOUR CLASSES GOING?

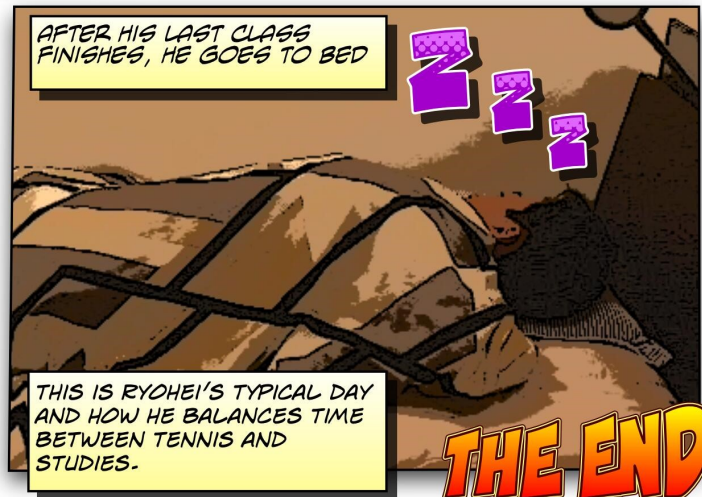
BEING ABLE TO SPEND TIME WITH MY FAMILY IS ONE OF THE PERKS OF STUDYING



HIS FIRST CLASS FINALLY STARTS AT 10:30 PM.



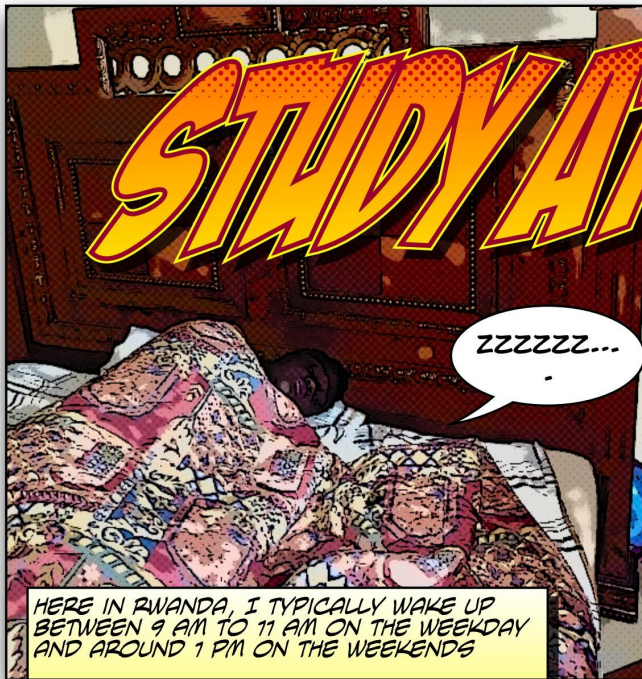
BUT HAVING A BAD CONNECTION IS NOT UNCOMMON.



AFTER HIS LAST CLASS FINISHES, HE GOES TO BED

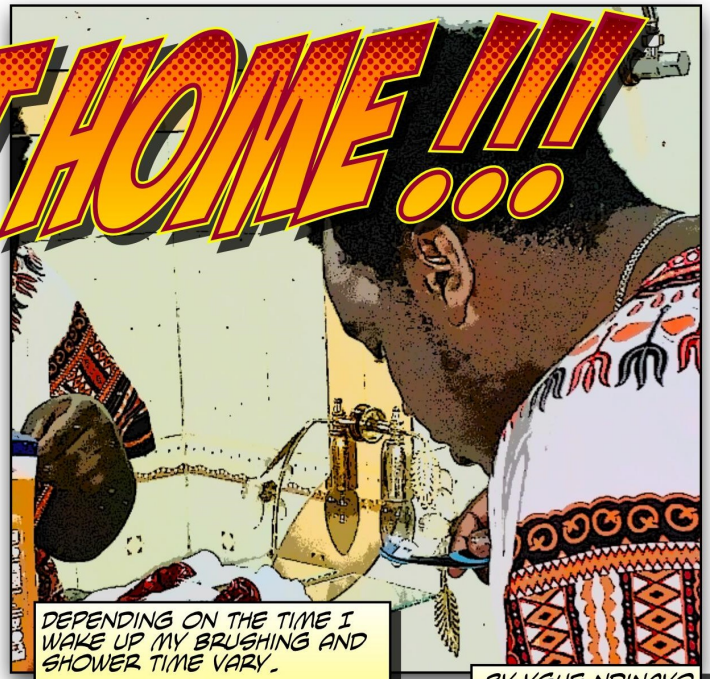
THIS IS RYOHEI'S TYPICAL DAY AND HOW HE BALANCES TIME BETWEEN TENNIS AND STUDIES.

THE END



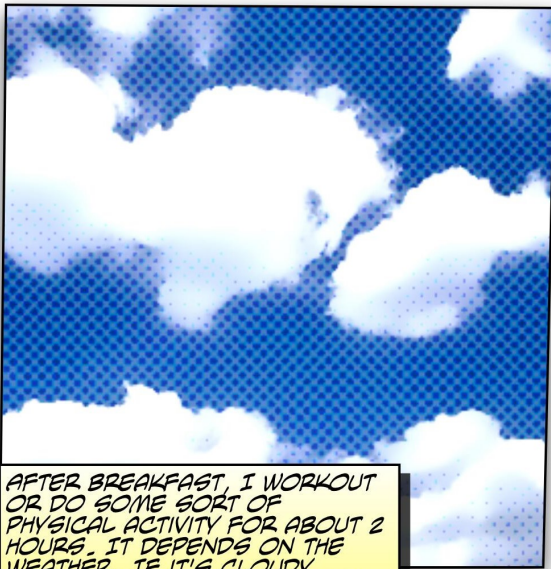
STUDY AT HOME!!!

HERE IN RWANDA, I TYPICALLY WAKE UP BETWEEN 9 AM TO 11 AM ON THE WEEKDAY AND AROUND 1 PM ON THE WEEKENDS



DEPENDING ON THE TIME I WAKE UP MY BRUSHING AND SHOWER TIME VARY.

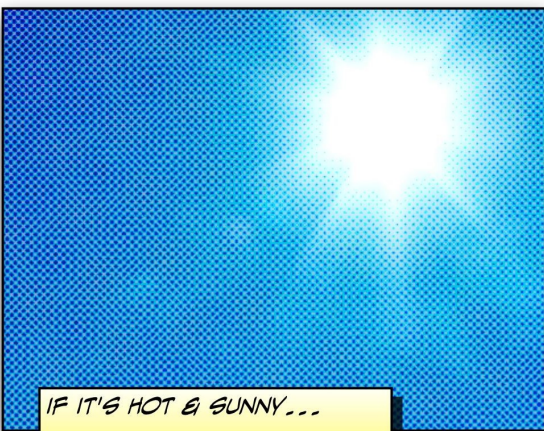
BY YGUE NDINAYO



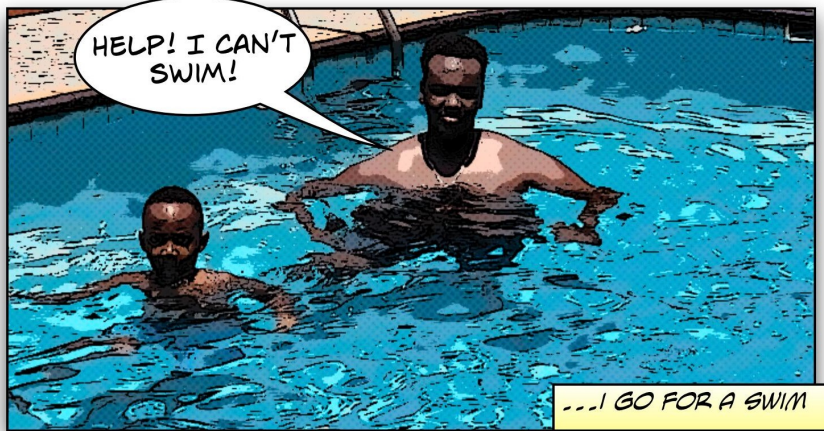
AFTER BREAKFAST, I WORKOUT OR DO SOME SORT OF PHYSICAL ACTIVITY FOR ABOUT 2 HOURS. IT DEPENDS ON THE WEATHER. IF IT'S CLOUDY....



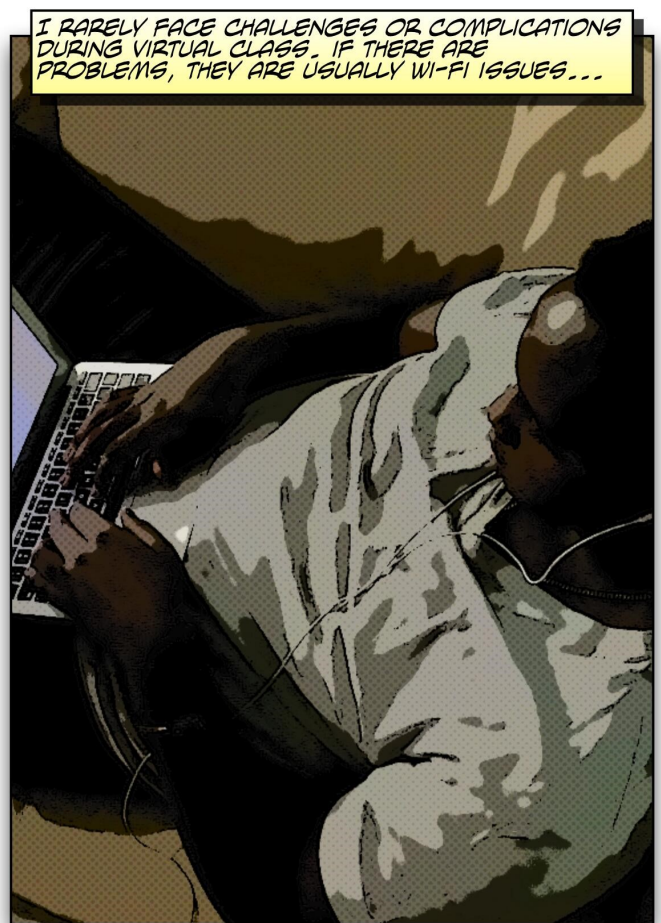
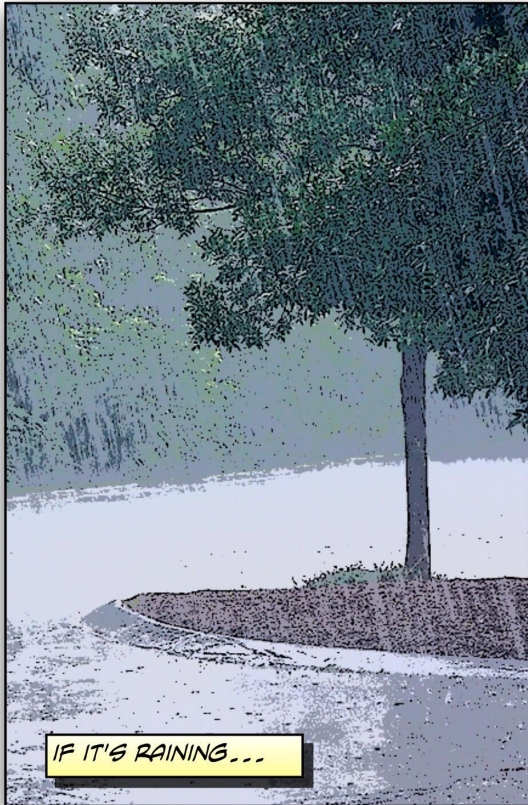
...I PLAY BASKETBALL



IF IT'S HOT & SUNNY...



...I GO FOR A SWIM

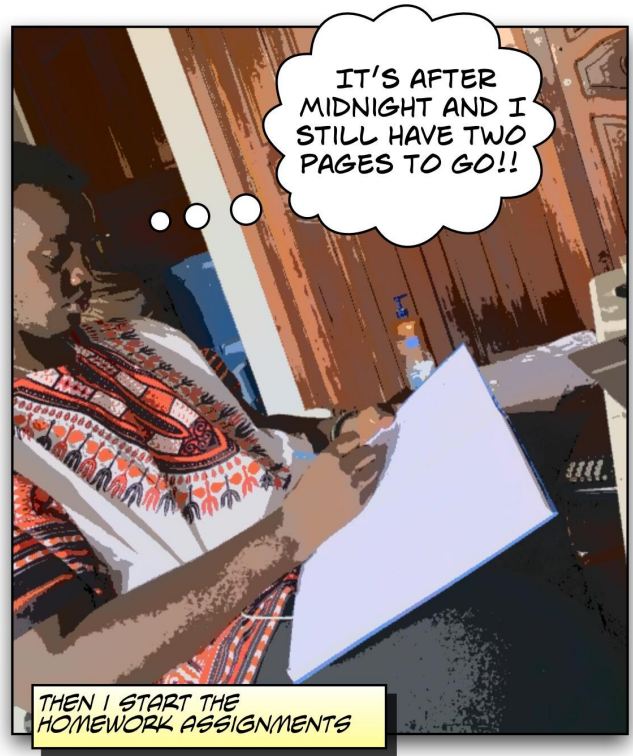


Office of English Language Learning

Washington College
Foster House, 2nd Floor
409 Washington Avenue
Chestertown MD 21620
Phone: 410-810-5009
Fax: 410-810-7451
Email: oell@washcoll.edu



CLASSES END AROUND 8:30 PM AND THEN I HAVE DINNER WITH MY FAMILY.



IT'S AFTER MIDNIGHT AND I STILL HAVE TWO PAGES TO GO!!

THEN I START THE HOMEWORK ASSIGNMENTS



I USUALLY END MY DAY AROUND 2 AM. THEN I GET SOME SLEEP SO I'M READY FOR THE NEXT DAY OF CLASSES.

ZZZZZZZ...

THE END