

Tawes Theatre Lighting Change Sheet

show tape color*

*Lighting Designers must complete and review this document with the Lighting Shop Manager before Load-In!
If you have any questions, contact the Lighting Shop Manager and/or Prof. Eckelman.*

Production: _____ Producer: _____

Lighting Designer: _____ email: _____ phone: _____

Lightboard Operator: _____ Stage Manager: _____

Load- in Date: _____ Strike Date: _____

Rep Plot Systems: Color & Templates

Fronts (1-9)	Backlight A (61-69)	Backlight B (81-89)	
Front Diags/ (51-59)	Front Diags\ (31-39)	Sidelight> (41-49)	Sidelight< (21-29)

Added Specials & Systems

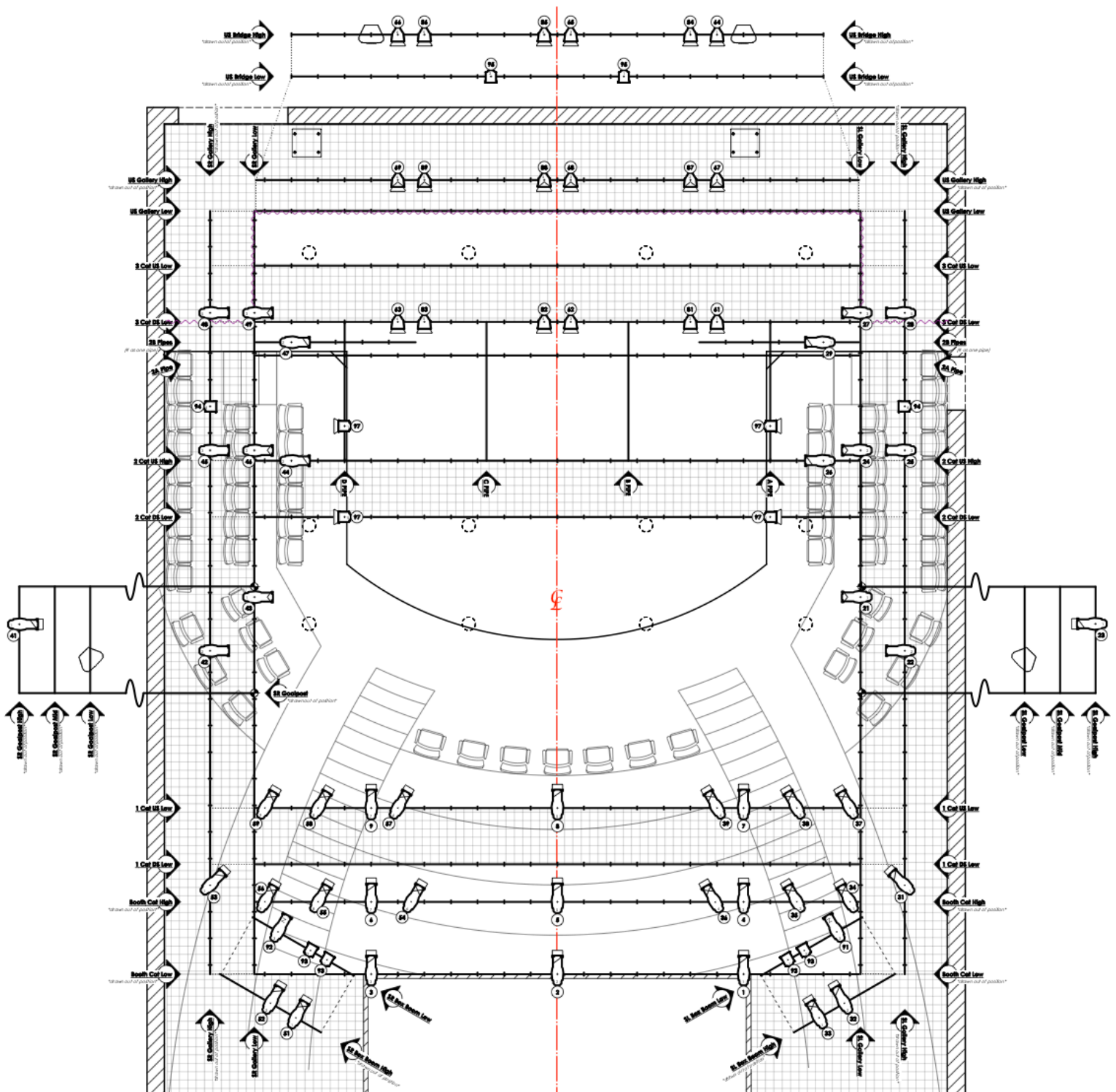
- List all added fixtures on the table below and mark their locations on the lightplot provided (see reverse).
- Be sure to indicate desired fixture type, color, and channel numbers (available options: 11-20, 71-80).
- Rep fixtures are marked with grey tape; added fixtures should be flagged your show color.*

Fixture (circle one)	Position (location)	Circuit (plug #)	Channel (board #)	Color & Template	Notes (purpose, focus info, accessories, etc.)
S4: 19° 26° 36° 50° Par: WFL MFL NSP VNSP Mini-10 MiniStrip BroadCyc Fresnel Practical Other					
S4: 19° 26° 36° 50° Par: WFL MFL NSP VNSP Mini-10 MiniStrip BroadCyc Fresnel Practical Other					
S4: 19° 26° 36° 50° Par: WFL MFL NSP VNSP Mini-10 MiniStrip BroadCyc Fresnel Practical Other					
S4: 19° 26° 36° 50° Par: WFL MFL NSP VNSP Mini-10 MiniStrip BroadCyc Fresnel Practical Other					
S4: 19° 26° 36° 50° Par: WFL MFL NSP VNSP Mini-10 MiniStrip BroadCyc Fresnel Practical Other					
S4: 19° 26° 36° 50° Par: WFL MFL NSP VNSP Mini-10 MiniStrip BroadCyc Fresnel Practical Other					
S4: 19° 26° 36° 50° Par: WFL MFL NSP VNSP Mini-10 MiniStrip BroadCyc Fresnel Practical Other					
S4: 19° 26° 36° 50° Par: WFL MFL NSP VNSP Mini-10 MiniStrip BroadCyc Fresnel Practical Other					
S4: 19° 26° 36° 50° Par: WFL MFL NSP VNSP Mini-10 MiniStrip BroadCyc Fresnel Practical Other					
S4: 19° 26° 36° 50° Par: WFL MFL NSP VNSP Mini-10 MiniStrip BroadCyc Fresnel Practical Other					
S4: 19° 26° 36° 50° Par: WFL MFL NSP VNSP Mini-10 MiniStrip BroadCyc Fresnel Practical Other					
S4: 19° 26° 36° 50° Par: WFL MFL NSP VNSP Mini-10 MiniStrip BroadCyc Fresnel Practical Other					
S4: 19° 26° 36° 50° Par: WFL MFL NSP VNSP Mini-10 MiniStrip BroadCyc Fresnel Practical Other					
S4: 19° 26° 36° 50° Par: WFL MFL NSP VNSP Mini-10 MiniStrip BroadCyc Fresnel Practical Other					
S4: 19° 26° 36° 50° Par: WFL MFL NSP VNSP Mini-10 MiniStrip BroadCyc Fresnel Practical Other					

Tawes Theatre Lighting Change Sheet

Lighting Designers must complete and review this document with the Lighting Shop Manager before Load-In!
If you have any questions, contact the Lighting Shop Manager and/or Prof. Eckelman.

Tawes Repertory Lightplot (see instructions on reverse)



Other Notes & Changes
