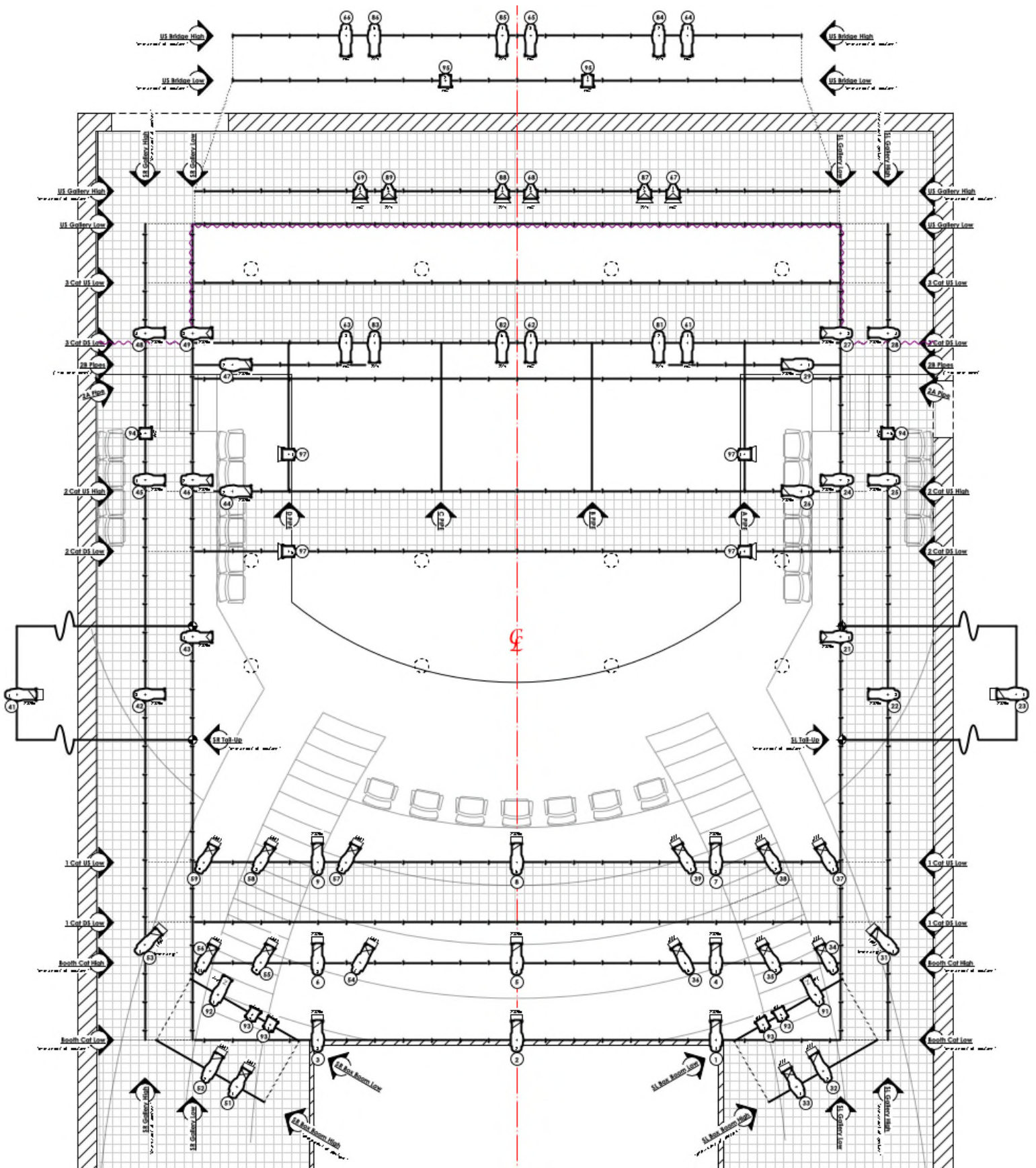


# Tawes Theatre Lighting Change Sheet

- Please mark additions on plot below, noting channel numbers.
- Reminder - grey tape= Rep fixture. Please mark your added lights with tape of your show color\*



Notes:

---

---

---

---

---

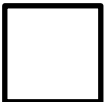
---

---

---

# Tawes Theatre Lighting Change Sheet

show tape color



Production: \_\_\_\_\_ Director: \_\_\_\_\_

Lighting Designer: \_\_\_\_\_ email: \_\_\_\_\_ phone #: \_\_\_\_\_

Lightboard Operator: \_\_\_\_\_ Stage Manager: \_\_\_\_\_

Load- in Date: \_\_\_\_\_ Strike Date: \_\_\_\_\_

Type (circle one)	Fixture (circle one)	Position (location)	Circuit (plug #)	Channel (board #)	Notes
Color Template Shutter Add	Par Fresnel ERS Practical Strip Other				
Color Template Shutter Add	Par Fresnel ERS Practical Strip Other				
Color Template Shutter Add	Par Fresnel ERS Practical Strip Other				
Color Template Shutter Add	Par Fresnel ERS Practical Strip Other				
Color Template Shutter Add	Par Fresnel ERS Practical Strip Other				
Color Template Shutter Add	Par Fresnel ERS Practical Strip Other				
Color Template Shutter Add	Par Fresnel ERS Practical Strip Other				
Color Template Shutter Add	Par Fresnel ERS Practical Strip Other				
Color Template Shutter Add	Par Fresnel ERS Practical Strip Other				
Color Template Shutter Add	Par Fresnel ERS Practical Strip Other				
Color Template Shutter Add	Par Fresnel ERS Practical Strip Other				
Color Template Shutter Add	Par Fresnel ERS Practical Strip Other				
Color Template Shutter Add	Par Fresnel ERS Practical Strip Other				
Color Template Shutter Add	Par Fresnel ERS Practical Strip Other				

Additional Notes:

---



---



---

**Please give a completed copy of this sheet to the Lighting Shop Manager before your opening night. If you have any questions, contact the Lighting Shop Manager or visit Shop Hours.**