

Washington
WASHINGTON COLLEGE
CENTER FOR ENVIRONMENT & SOCIETY
300 WASHINGTON AVENUE
CHESTERTOWN, MD 21620



CES at 20

The 2019-2020 Academic Year marks the Center for Environment & Society's 20th Anniversary of being a Center at Washington College.

The Center for Environment & Society at Washington College was created in 1999 to promote interdisciplinary learning, research and exemplary stewardship of natural and cultural resources. Its primary objective is to support the integration of ecological and social values. Over the last twenty years, we have worked to not only remain resilient as an organization within Washington College, but to foster an environment of resilience for WC students and aim to prepare them to be a generation of resilient leaders.

Stay in touch with us on Facebook, Instagram and our website to celebrate with us at many events throughout the year.



facebook.com/CenterforEnvironmentandSociety/

@cesatwashcoll

www.washcoll.edu/centers/ces

Celebrating 20 Years Discover CES

The Center for Environment & Society at Washington College





CENTER FOR ENVIRONMENT & SOCIETY
AT WASHINGTON COLLEGE

Check us out on

instagram @cesatwashcoll

See what events we have
this year by checking out
our website:

washcoll.edu/centers/ces



Natural Lands Project



Each season brings new and exciting achievements for the **Natural Lands Project**, a habitat creation and water quality improvement project started by CES in 2015, and 2018 was no exception. Over three years we have planted close to 500 acres of grasses and installed 35 acres of wetlands resulting in annual nutrient reductions of 3,813 lbs of nitrogen, 235 lbs of phosphorus and 140,682 lbs of sediment. In addition to the incredible water quality improvements, birds and pollinators are responding positively to our efforts. 2018 summer breeding bird surveys found numerous grassland birds occupying sites that were previously crop fields and the number of pollinators observed has been amazing. Some landowners even report having seen and heard quail on their properties for the first time in many years. A sure sign of success. The foundation for the project was and continues to be the knowledge, experience and lessons learned from our years of habitat creation and management of quail lands on the River and Field Campus.



Elle Bassett '12, is currently working with ShoreRivers as the Miles-Wye Riverkeeper. As Riverkeeper, Elle's role is to give a voice to the rivers that she works to protect. Elle attributes much of her success as a Riverkeeper to WC's Chesapeake Semester Program.

"My experience at Washington College is the foundation of my career as Miles-Wye Riverkeeper. I participated in Chesapeake

Alumni in the Field

I want to inspire future generations to become environmental stewards.

Semester during my Junior year, which opened my eyes to the interactions between our local society and environment. I gained a deeper understanding of the stakeholders in the Chesapeake and how they interact with one another. Chesapeake Semester changed the way that I looked at the land and the people who lived in the watershed. I would find myself looking at failing silt fences on road trips or noting who planted cover crops on their fields during the winter. The program, in essence, trained me on how to be an effective Riverkeeper."



Max Moore '22 was recognized this year as one of CES's first ever Environment & Society Fellows. The Environment & Society (E&S) Fellowship is a new program that was initiated for the 2018-2019 Academic Year and awards students with financial assistance throughout their enrollment at Washington College. Each of our fellows also receive primary consideration for participation in any of CES's experiential learning programs and involvement in E&S Adventures like birding trips, camping excursions, kayak trips and more!

Featured Student

Max's on campus involvements include:

- Anthropology Major
- Volunteer with Public Archaeology Lab
- Varsity Men's Crew Team
- Garden Club
- Model UN Team
- Intern with Eastern Shore Food Lab
- Intern with the Office of Sustainability, focusing on recycling

Celebrating a Resilient 20 Years at CES

1999

The Center for Environment & Society was launched.

2003

Implementation of Rural Communities Leadership Program.

2003

GIS Lab established with initial funding from the Andrew W. Mellon Foundation.

2009

Launch of Chesapeake Semester.

2010

Acquisition of R/V *Callinectes*.

2011

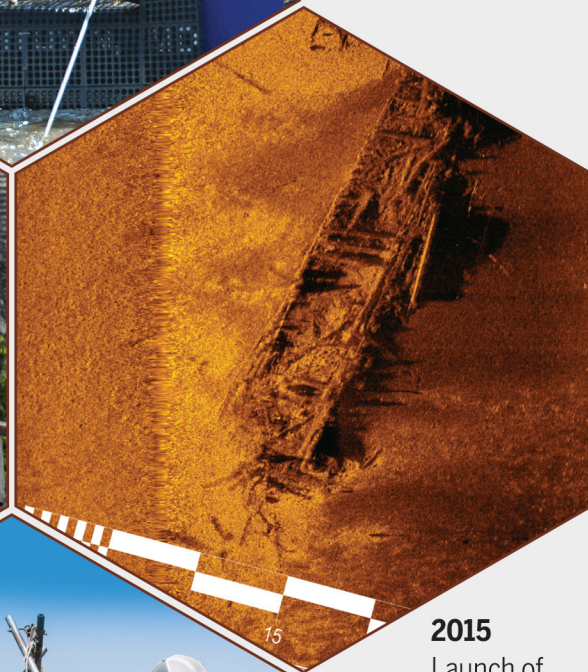
Launch of Chester River Watershed Observatory

2013

WC's R/V *Lookdown* verifies discovery of 18th century shipwreck in the Chester River.

2015

Dr. Harry Sears generously bequeathed 4,700 acres of field, farm, marsh and forest to WC, which would become the River and Field Campus in 2017.



2006

Inaugural Cardboard Boat Race during Waterfront Festival.

2007

Archaeology Lab comes under CES.

2008

CES Advisory Board Formed.



2015

Launch of Natural Lands Project.

2016

CES successfully reaches \$10 mil endowment.

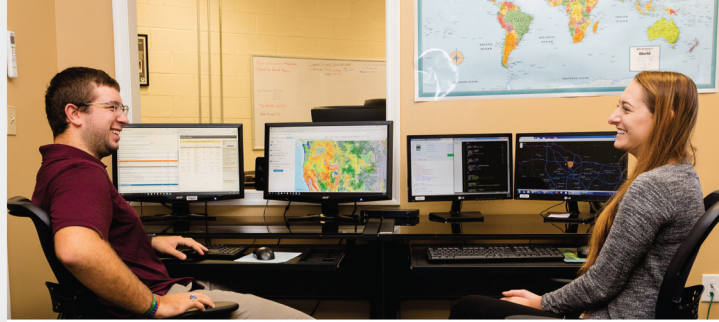
2016

GIS employs 110 WC student interns for the Spring semester. The most we've ever had in one semester.

2018
First Young Environmental Stewards Conference launched.

2018
Inducted the first cohort of Environment & Society Fellows.

2018
Foreman's Branch Bird Observatory successfully banded a quarter of a million birds.



GIS and E-Nnovation grant

Washington College was awarded its third \$1 million grant from the Department of Commerce's Maryland E-Nnovation Initiative Fund (MEIF), matched by a \$1 million grant from The Hodson Trust. The \$2 million will be used to expand its GIS Program, led by GIS Program Director, Erica McMaster by establishing an endowed directorship for the College's GIS Program, broadening student avenues for study and professional experience in the growing geographic information systems (GIS) field, and expanding economic development opportunities and encouraging investment in business development and pilot projects.

Since 2003, the College's GIS Lab, overseen by CES, has been training student interns in GIS technologies and analyses to execute funded projects across the country, while preparing to become the new generation of GIS specialists. "The new grant will enable the College to grow the GIS program and extend it more widely throughout the liberal arts curriculum, as well as broaden collaborations with faculty research and teaching," says CES Director John Seidel, who helped inaugurate the GIS program. It will also allow the College to consider an academic program in geospatial technologies in conjunction with the GIS Lab.

This is the second E-Nnovation grant CES has received. The first was awarded in 2016 for the position of Chief Innovation Officer.

As of **2019**, 93 teachers in Kent and Queen Anne's Counties completed the 75-hour Rivers to the Bay Professional Development Course.

To donate to CES please go to:
washcoll.edu/centers/ces/support-ces.php



COMING FALL 2019 Semans-Griswold Environmental Hall

The Waterfront Campus at Washington College was first conceptualized in 2008, and now, thanks to the generosity of our donors over the past ten years, we will finally see this vision come to life!

SGEH will provide academic and lab spaces for the College's growing environmental programs. It will also be a regional hub for hands-on research on the Chesapeake, and a magnet for thought leadership centered on the environment and the challenges facing the region, the country, and the world.

